



28 CULLEN VIEW

PROBUS, TRURO,
TR2 4NY

Philip Martin

ESTATE AGENTS, CHARTERED SURVEYORS, VALUERS & AUCTIONEERS



28 CULLEN VIEW

PROBUS TRURO

TR2 4NY

MODERN DETACHED HOUSE IN DESIRABLE VILLAGE
LOCATION

Situated in a sought after development within the village
just a short distance from the Primary School and village
square.

Detached three bedroom house with a recently refitted
kitchen.

Garage, parking and enclosed rear garden.

EPC - C

C TAX - Band D

GUIDE PRICE £359,950

Philip Martin

PHILIP MARTIN

9 Cathedral Lane, Truro, Cornwall, TR1 2QS

Truro: 01872 242244 **St Mawes:** 01326 270008

E: sales@philip-martin.co.uk

www.philip-martin.co.uk



The particulars are issued on the understanding that all negotiations are conducted through Philip Martin who for themselves or for the Vendor whose agents they are, give notice that:

(a) Whilst every care has been taken in preparation of these particulars, their accuracy is not guaranteed, and they do not constitute any part of an offer or contract. Any intended purchaser must satisfy himself by inspection or otherwise as to the correctness of each of the statements contained in these particulars.

(b) They do not accept liability for any inaccuracy in these particulars nor for any travelling expenses incurred by the applicants in viewing properties that may have been let, sold or withdrawn.

Sales - Referral fee disclosure - We may recommend conveyancing services to you through Muve. These services are optional, however, should you use their services, Philip Martin will receive a payment which is typically £200 plus vat.

THE PROPERTY

A superb detached house located within Cullen View, one of the village's most sought after developments. There are three bedrooms, large sitting room with sliding patio doors leading to the rear south facing garden, kitchen, separate dining room, cloakroom and bathroom. Attached to the house is a single garage with electric up and over roller door and an attractive brick driveway provides private parking. At the rear is the private enclosed south facing garden which has been paved for ease of maintenance.

PROBUS

Probus is a thriving community approximately six miles east of Truro and a little further west of St. Austell. The village has an excellent range of everyday facilities including Parish Church, public house, primary school, farm shop, general stores with post office, village hall, Chinese and Indian takeaways and even a fish and chip shop. A very regular bus service connects to both St. Austell and Truro and here there are a wider range of facilities including banks, building societies, schools, colleges and main line railway link to London (Paddington). The village is also easily accessible to the picturesque Roseland Peninsula and many of the beaches along the south Cornish coast.

In greater detail the accommodation comprises (all measurements are approximate):

ENTRANCE HALL

Space for hanging cloaks.

CLOAKROOM

Low level w.c., corner wash hand basin with tiled splashback, radiator, frosted double glazed window.

SITTING ROOM

5.44m x 3.00m (17'10" x 9'10")

Window to front, sliding patio door to rear and radiator.



DINING ROOM

2.92m x 2.44m (9'6" x 8'0")

Window overlooking the rear garden. Radiator. Door to:-

KITCHEN

2.95m x 2.97m (9'8" x 9'8")

Recently refitted with an excellent range of both base

and eye level kitchen units with a worktop over incorporating single stainless steel sink with single drainer and tiled splashbacks. Space for washing machine and dishwasher. Window to front. Door to hall.

FIRST FLOOR

Landing with airing cupboard.

Philip Martin



BEDROOM 1

3.63m x 2.97m (11'10" x 9'8")

Window to front and built in wardrobes.

BEDROOM 2

3.25m x 2.97m (10'7" x 9'8")

Window to front and built in wardrobe.

BEDROOM 3

2.74m x 2.06m (8'11" x 6'9")

Window overlooking the rear garden and cupboard.

BATHROOM

2.00 x 1.8 (6'6" x 5'10")

Modern white suite with panelled bath, separate shower, w.c. and wash hand basin. Half tiled walls and window to rear.

OUTSIDE

There is driveway parking to the front which in turn provides access to the garage. There is a small patio to the front, ideal for sitting out to catch the last of the days sun. There is access to the rear garden which is geared to low maintenance with a large patio and a small area with artificial grass.

GARAGE

5.59m x 2.79m (18'4" x 9'1")

Up and over door and pedestrian door to garden.

SERVICES

Mains water, electricity and drainage are connected. Mains gas fired central heating.

N.B

The electrical circuit, appliances and heating system have not been tested by the agents.

VIEWING

Strictly by Appointment through the Agents Philip Martin, 9 Cathedral Lane, Truro, TR1 2QS. Telephone: 01872 242244 or 3 Quayside Arcade, St. Mawes, Truro TR2 5DT. Telephone 01326 270008.

DATA PROTECTION

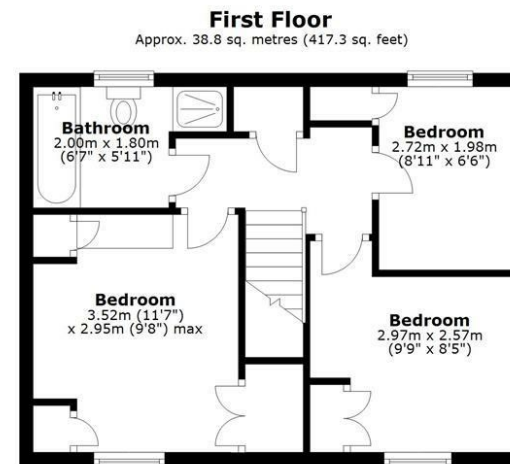
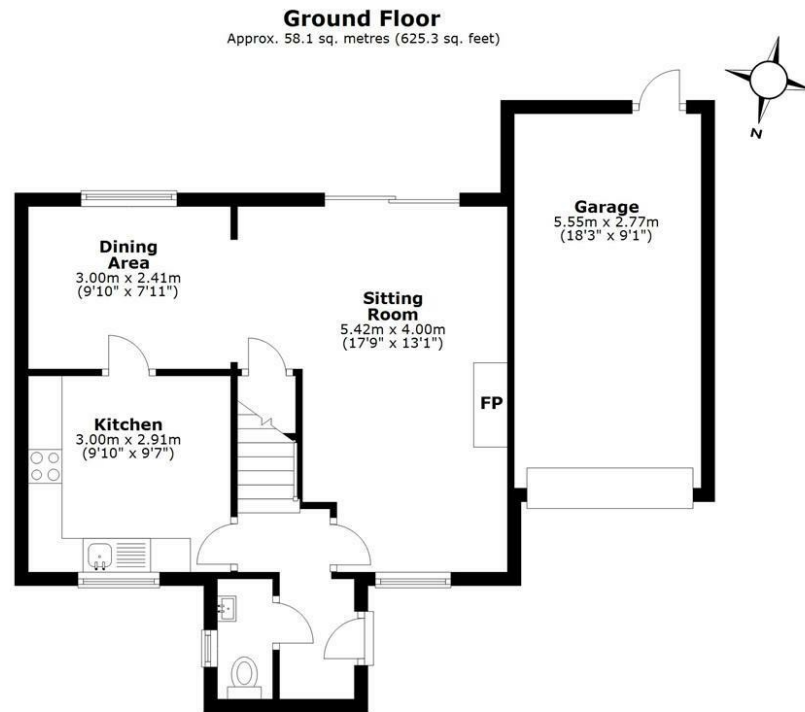
We treat all data confidentially and with the utmost care and respect. If you do not wish your personal details to be used by us for any specific purpose, then you can unsubscribe or change your communication preferences and contact methods at any time by informing us either by email or in writing at our offices in Truro or St Mawes.

DIRECTIONS

Proceed into Probus from the Truro direction towards the centre of the village and turn left into Cullen View (opposite the village hall entrance). Follow this road around to the right and the property will be easily located on the right hand side.

COUNCIL TAX

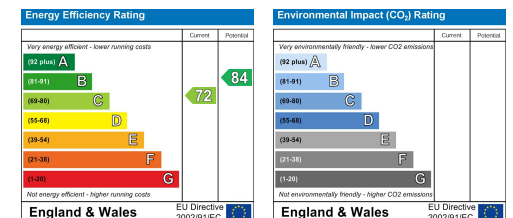
Band D.



Total area: approx. 96.9 sq. metres (1042.6 sq. feet)

Whilst every attempt has been made to ensure the accuracy of the floorplan contained here, measurements of doors, windows, rooms and any other items are approximate and no responsibility is taken for any error, omission or mis-statement. This plan is for illustration purposes only and should be used as such.
Plan produced using PlanUp.

28 Cullen View, Probus



Philip Martin





PHILIP MARTIN

Truro 01872 242244 St Mawes 01326 270008 www.philip-martin.co.uk

Philip Martin

ESTATE AGENTS, CHARTERED SURVEYORS, VALUERS & AUCTIONEERS